

ARTS & PERFORMING ARTS



Art Effect

Use the power of art to share powerful compositions for the given social themes.

Category	Theme	Paper Size	Medium
VI-VIII	"Original Artwork themed around the number 25"	12*18 inches Canvas	Pencil / Charcoal / Pastels / Watercolours / Poster Paints / Collage / Oil Paints
OI-OIII	The Unheard Voices of Conflict: Stories from Around the World," and can involve a response to historical or current conflict.	A3 Drawing Sheet	Pencil / Charcoal / Pastels / Watercolours / Poster Paints / Collage / Oil Paints

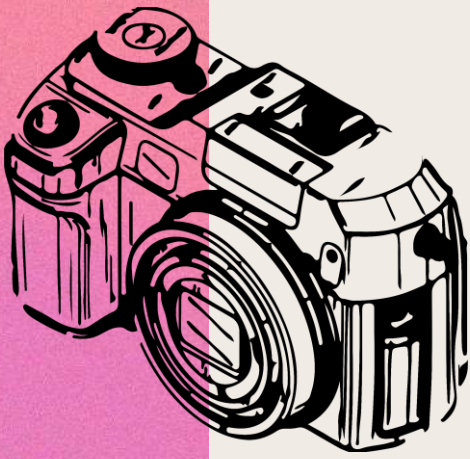
Format & Rules

1. Each delegation can have up to three students participate
2. The participants will have 90 minutes on both days to complete their pieces
3. The participants must bring all the material and drawing board, whereas the event organizers will provide the drawing sheets.
4. After completion of time, the art compositions will be displayed to the judges for judgment.

5. Judgment Criteria:

- Originality of the composition
- Clarity of the theme
- Overall quality of artistic composition & relevance/portrayal with theme





The Big Picture

The photography competition is aimed at allowing you to get the most from your camera and prove that you don't always need the auto button. Outdoor and indoor photography is covered and you are encouraged to experiment where possible, while following any one of the given themes.

Format & Rules

Category	Theme	Objective
A&B	Sports	Sports events will be a dominant force at the Melange event. Photographers will be expected to capture the biggest moments and document the most popular sports persons.
	World Press Corps	With MUN & declamations as a popular feature of Melange, photographers will be expected to indulge in some photojournalism.
	Lifestyle	An intersection of art & food will be on display at the Melange. There is a food and art photo craze and that is exactly what is expected of our photographers. Stare into the depths of paintings and food dishes and click away!

- Each delegation can have up to three students participate
- Participants are expected to bring in their own DSLR cameras
- A good quality telephone may also be used.
- Pictures will be taken on Day 1 and Day 2. At the end of Day 2, participants will email their best three photographs for a display on Day 3
lamelange@learningalliance.edu.pk
- Judgment Criteria:
 - Relation with the theme
 - Creativity.
 - Composition.

Food Pantry Challenge

Do you enjoy independence; making decisions and taking control of the kitchen and the pantry? Then bring out your inner chef with the “**holiday-feast**” themed challenge.

Format & Rules

1. This is a **team based category** with each team comprising of three members
2. The competition will be held over a course of two days. Half of the teams will compete on day 1 and the other half on day 2, with final results announced at the end of day 2 competition.
3. Each team will be required to make 1 main course dish, 1 accompaniment and 1 dessert.
4. Teams must bring typed copies of their dish recipes on the day of the competition
5. Each team must follow the theme of “**holiday feast**” in their dishes.
6. Each team will be given **2.5 hours** to prepare and present their dishes.
7. Each team will be provided with a hob, an oven, running water and working counters.
8. Each team must bring the following for use if required:
 - i. All ingredients
 - ii. Appliances if needed
 - iii. Serving dishes and any item for presentation
9. Judgment Criteria:
 - Taste
 - Clarity of Theme
 - Recipe Draft
 - Skill and techniques used while cooking and plating
 - Hygiene, economy & tidiness



Shakespeare Set in Another Time

Let's shake things up a bit and make them exciting! Delegates will have the freedom to prepare important scenes from a Shakespearean play and set them in either of the two time settings- Elizabethan or Modern.

Format and Rules

1. Time duration must not be shorter than 12 minutes and no longer than 15 minutes
2. Each delegation must submit a copy of the script one week prior to the event
3. Each delegation may not have more than 8 members, with each actor in a costume
4. All lines and dialogues must be memorized by the actors
5. A narrator is required to present the context of the scenes
6. One song performance to a pre recorded song or through live singing is essential
7. Three or more props to demonstrate the time setting (for example for a modern time setting a letter might be read from a smartphone)
8. When preparing for the performance, students are advised to consider how the new time setting influences the characters and dialogues, costumes, and overall atmosphere of the scene
9. All performances will take place on Friday (exact schedule will be shared closer to the event). The winning delegation will present a slightly extended version of the performance to an audience on Saturday.
10. Judgment criteria
 - a. Creativity
 - b. Adherence to chosen time setting
 - c. Acting skills
 - d. Costume design
 - e. Overall presentation

